



Haoma Mining NL

Annual General Meeting

Wednesday

November 30, 2011

Welcome



Haoma Mining NL

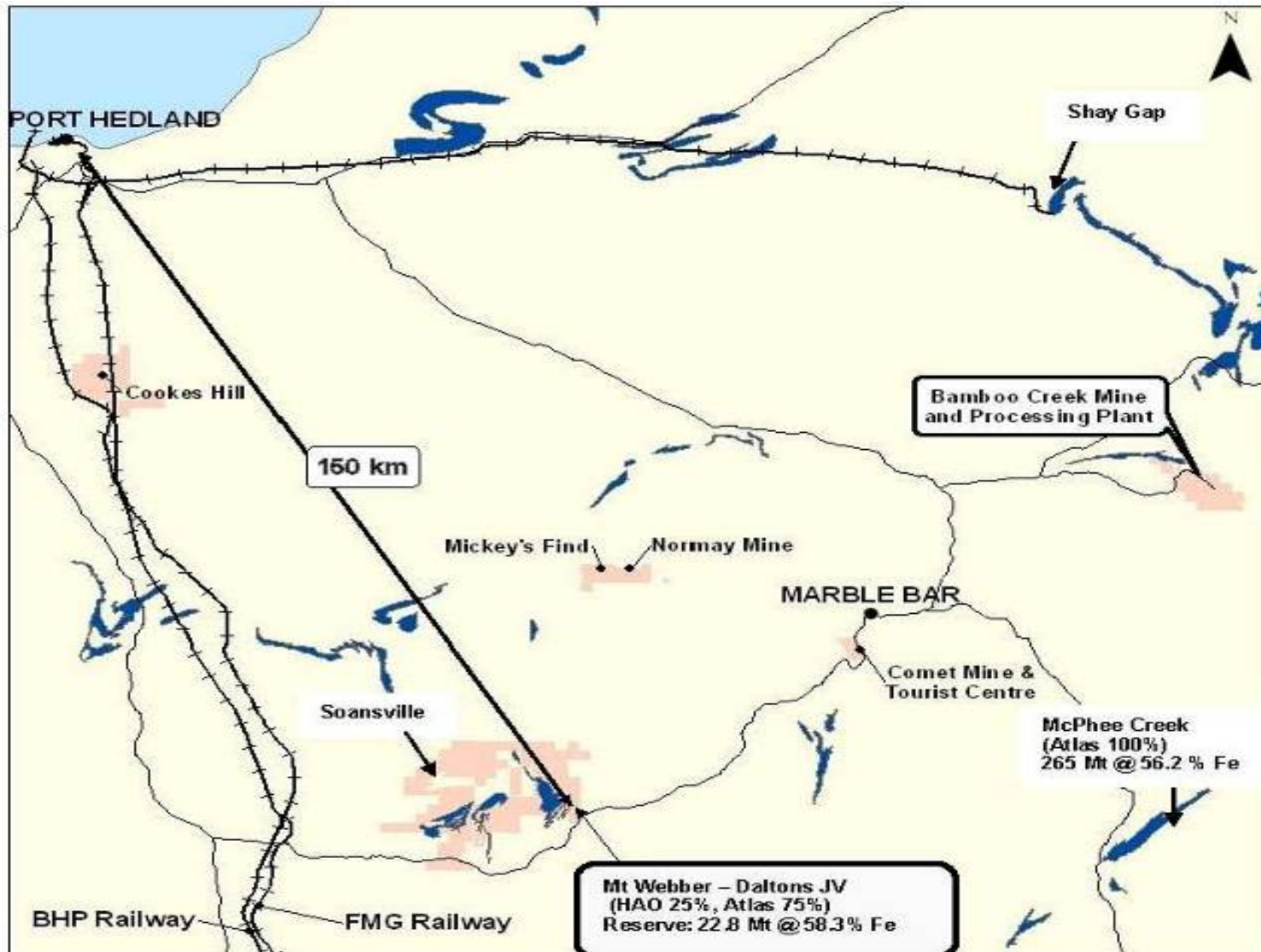
Agenda

- Chairman's Address
- Business of the day



Haoma Mining NL

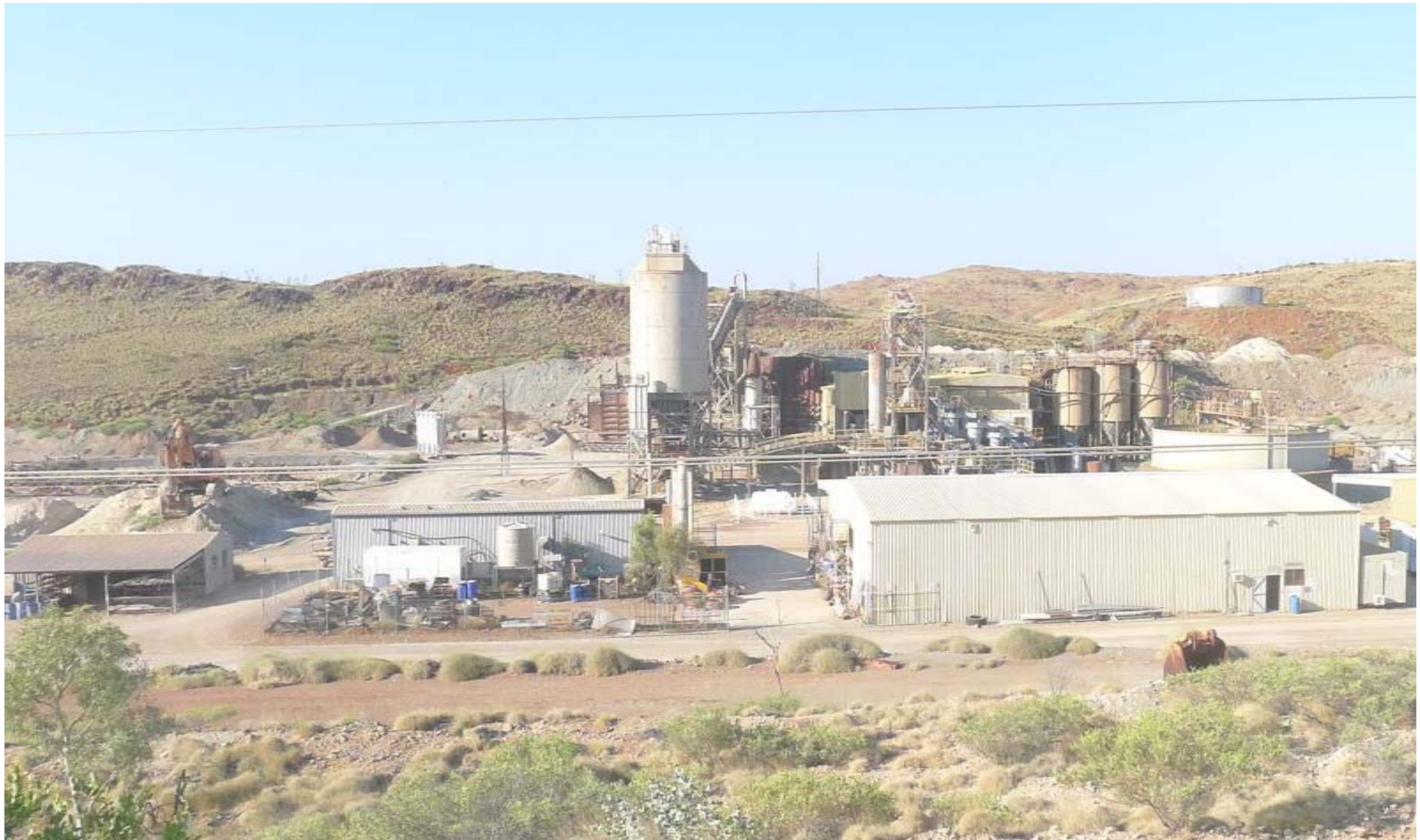
Location of Haoma's Mining Projects including the Mt Webber Daltons JV Iron Ore Project





Haoma Mining NL

Bamboo Creek Processing Plant





Haoma Mining NL

Bamboo Creek Tailings Dam





Haoma Mining NL

Bamboo Creek Plant, Bamboo Creek Valley and
Bamboo Creek Range (on right) which contains gold mineralisation





Haoma Mining NL

Bamboo Creek gold

Using the Refined Elazac Extraction Method, we have successfully extracted gold from Bamboo Creek tailings. In the Annual Report we advised shareholders the **fine gold recovered from a 10.42 kg parcel of Bamboo Creek Tailings equated to a gold grade of 41.37g/t.**

C Bamboo Creek Gold



We are now well advanced in developing a sustainable commercial process to extract gold from Bamboo Creek Tailings and other Bamboo Creek ores.

In the new year we anticipate establishing a commercial gold mining operation at Bamboo Creek.



Haoma Mining NL

Mt Webber, Pilbara WA





Daltons JV Mt Webber DSO Reserves Table (Probable) - As at 30 June 2011

Table 1: Daltons JV Mt Webber DSO Reserves Table (Probable) - As at 30 June 2011										
Location	Ore Type	Reserve Classification	Tonnes (Kt)	Fe	SiO₂	Al₂O₃	P	S	LOI	CaFe
				(%)	(%)	(%)	(%)	(%)	(%)	(%)
Daltons JV	Bedded	Probable	22,809*	58.3	5.9	1.6	0.09	0.02	8.2	63.6

Note: Ore Reserves defined at a 50% Fe cut-off grade.

* Reserves are subject to Joint Venture interests in the ratio AGO 75% : HAO 25%, Haoma's interest equates to 5,702 Kt



Haoma Mining NL

Mt Webber gold

Overall the Mt Webber iron ore DSO Reserve is defined at 22 millions tonnes at 58.3% Fe. There are many additional lower grade tonnes. **The iron ore is low in impurities and contains a significant amount of gold.**

Laboratory testing shows the gold content of the Mt Webber ore can be conclusively measured. **These tests have shown that the gold content is up to 2ozs per tonne.**

See Table 2.

Over the last month significant progress has been made on developing a commercial process to extract gold from Mt Webber ore.



Table 2: Significant Results from processing Bulk Ore samples of Mt Webber Drill Core using the Refined Elazac Assay Method (Elazac Method)

Area Sampled	Sample Description	Gold Assay by Traditional Method	'Calculated' Gold Head Grade using Refined Elazac Assay Method	
				g/t
1. Daltons/Soansville: Reported December 2008	17 drill chip samples, over 21.8 metres from 3 drill holes	0.059g/t	Leached Trial Grade	0.176
			Tail Grade 'Calculated' Gold	76.09
			Head Grade	> 76.0
2. Daltons/Mt Webber May-July 2011 (Samples from diamond drill holes RDDW002 location East 738955.19, North 7617235.26, Dip/Azim -90/0, & RDDW003 location East 739163.67, North 7617445.42, Dip/Azim -90/0)	Sample sizes, 20-90 kg	0.08 g/t	Bamboo Creek Lab	4.5 5.0 17.0 75+
			Independent Lab	4.5 7.5 31+
			ALS	80+
3. Daltons/Mt Webber Sept./Oct. 2011 (Sample from approximately 20 meters of RC drill hole RCDW029; location East 739160, North 7617447, Dip/Azim -60/90)	Sample size: 3a: 1.835 kg 3b: 10kg	0.08 g/t	Independent Lab	62.3
			Independent Lab	71.3



Haoma Mining NL

Comet Gold Mine Plant





Haoma Mining NL

Comet Gold Mine restored National Diesel Power Engine





Haoma Mining NL

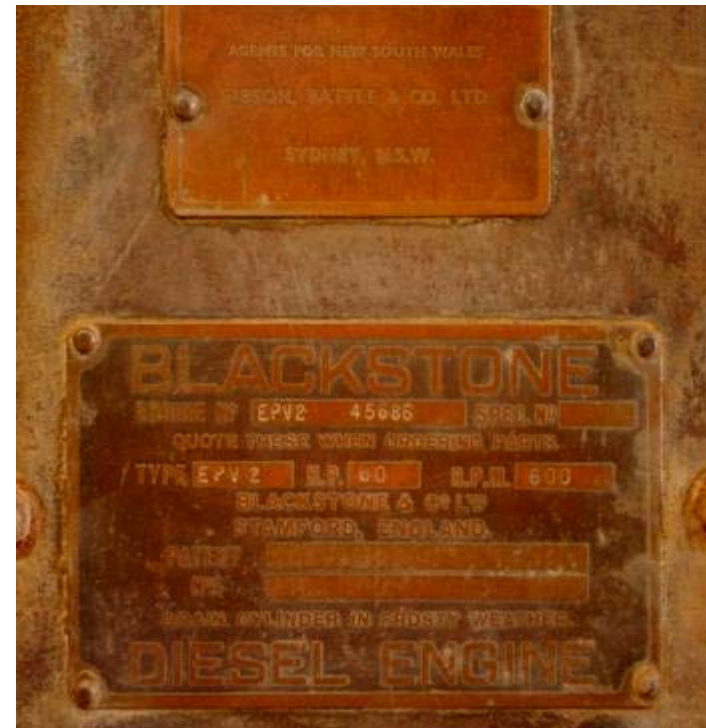
Comet Gold Mine restored Ruston Diesel Power Engine





Haoma Mining NL

Comet Gold Mine restored Blackstone Diesel Power Engine





Haoma's Challenges

Obtain port and rail access for iron ore:

- The current situation with BHP, RIO Tinto and Fortescue restricting access to their facilities at a fair commercial rate is not acceptable.
- The Western Australian State Government needs to ensure that BHP, Rio Tinto and Fortescue allow access to port and rail facilities (if available) at commercial rates

Mineral Resources Rent Tax (MRRT):

- The present proposal that the MRRT applying to iron ore mining companies earning profits in excess of \$75 million per annum means it will be very difficult for small companies to raise capital.
- There is little doubt that some States will challenge the MRRT in the High Court which means it is unlikely the tax will commence in the 2012/13 year.



Haoma Mining NL

Acknowledgements

The Haoma Board wishes to acknowledge the great contribution by a number of people in solving Haoma's technical problems over the last 12 months.

In particular, the Board's thanks go to Mr Peter Cole, Professor Peter Scales and Mr Hugh Morgan who have helped us **solve the gold assay problem with Pilbara ores; and the extraction of gold and other metals from these Pilbara ores.** The Board also thanks all **other consultants** who have contributed to this work.

In addition the Haoma Board would like to thank Mr Tristin Cole, Mr Steve Wilson, Mr Bob Ward and all others who have been involved in operating the Bamboo Creek Plant. We also acknowledge the work of our former geologist Sandra McKenzie for her contribution to Haoma's understanding of its Western Australian and Queensland exploration targets.

The Board also extends thanks our Top Camp Managers in Queensland, Merlene Manderson and Sue Kennedy and to our Comet Mine Tourist Centre Manager in Western Australia, Kylie Hutton.